

PRODUCT

Support Communication



PROVIDING THE INFORMATION THAT CONNECTS US ALL!

To:	All FP-30 Digital Scale Users	Date:	December 1, 2011
From:	Brian Klein – Product Manager	Reference Number:	020-11
RE:	January 2012 Rate Change Instructions – FP-30		

The Enclosed Rate Chip is for Updating the Shipping Rates on your FP-30 Digital Postage Scale

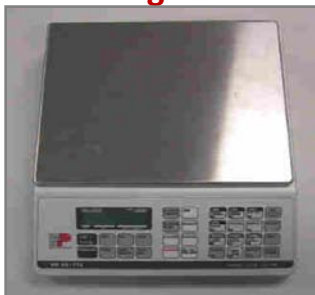


WARNING: Do **Not** Attempt To Install the Rate Chip Into Your **Postage Meter!**
This Rate Chip Is For Use With the FP-30 **External Digital Scale** Only!

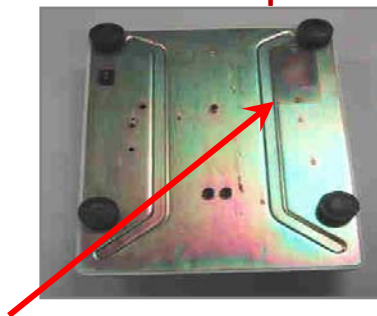
Please follow these simple instructions for updating the USPS® Rates on your FP-30 Scale:

1. Switch the **scale** OFF and disconnect the power cord
2. On the bottom of the **scale**, locate a small access panel to the rate chip compartment
3. Remove this panel and gently remove the old rate chip from the scale
4. Insert the new rate chip – You will notice that this chip can only be inserted one way
5. Re-install the small access panel on bottom of scale
6. Re-connect the power cord and turn the scale ON
7. The scale is now ready for operation with the new postage rates
8. Please discard the old rate chip after replacement – please do not return to FP

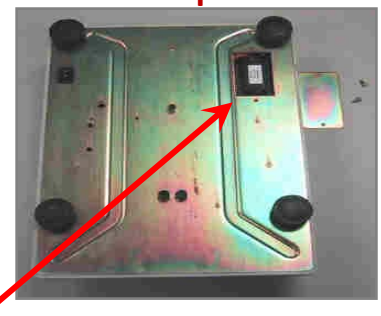
FP-30 Digital Scale



Rate Chip



Rate Chip Access



Instructional video also available at: <http://www.fp-usa.com/movies/ratechipmovies/fp15-30.mpg>

REMINDER: DO NOT INSTALL THE NEW RATE CHIP UNTIL JANUARY 22nd, 2012!

If you have any questions, please contact your local FP Authorized Dealer or visit FP's website: www.fp-usa.com